

PITYRIASIS LICHENOIDES CHRONICA

Pityriasis lichenoides chronica (PLC) is a self-limited rare inflammatory skin condition that presents with multiple scaly, erythematous to brown papules on the trunk and extremities.

The condition primarily affects young adults and children and lasts anywhere

from months to years and can relapse and remit. The lesions occurring from PLC can either present as hypopigmented (dominant) or hyperpigmented macules or patches. Both presentations are benign, non-scarring and primarily asymptomatic.

Common treatment plans include a 'watch and wait' approach; oral medications in the form of antihistamines, antibiotics, and/or methotrexate, and phototherapy.

The precise cause of PLC is unknown.



1 Active inflammation

Dark skin
Scaly, light brown to dark brown papules

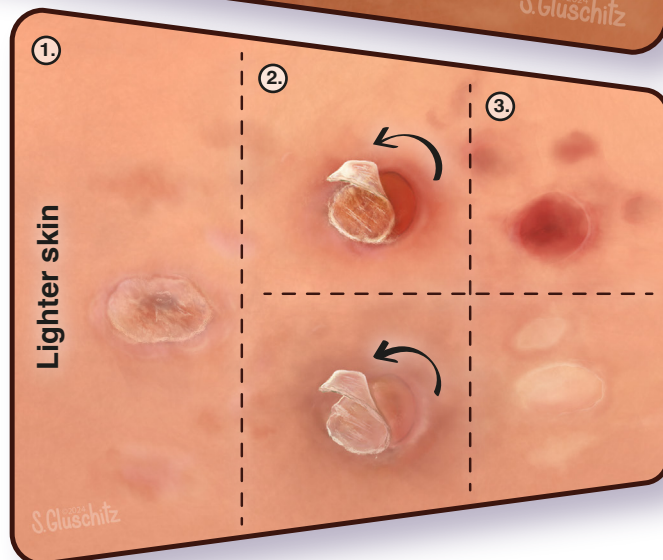
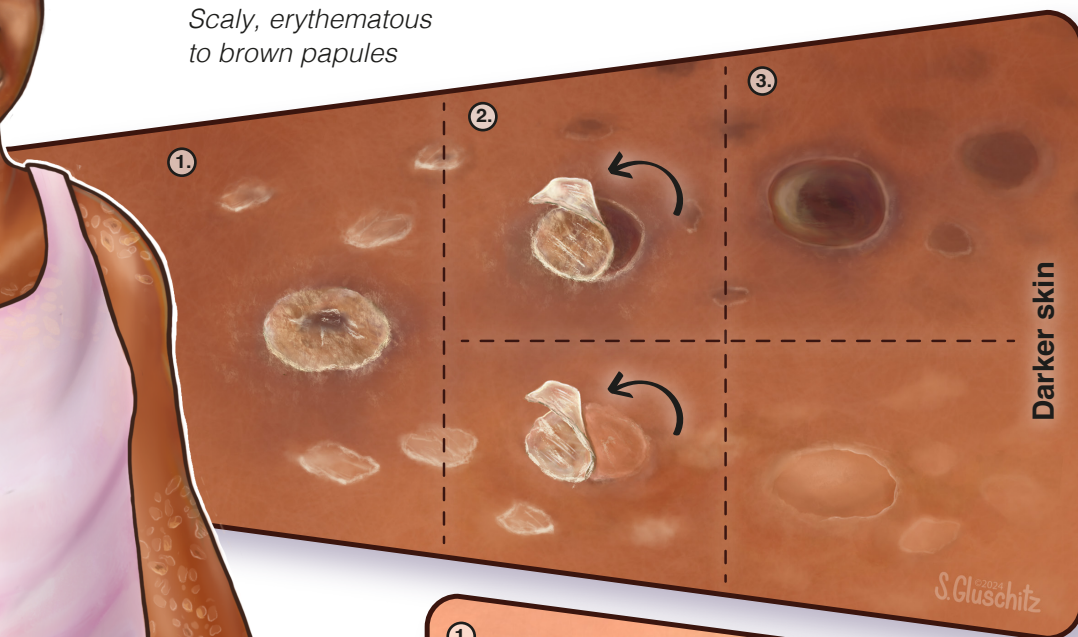
Light skin
Scaly, erythematous to brown papules

2 Disease progression

Scabbing of the lesion

3 Late stage

Hyper- or hypopigmentation of the macules or patches. Lighten and disappear after 2-3 months



Location
Small papules primarily on extremities and trunk