

# LICHEN PLANOPILARIS

Lichen Planopilaris (LPP) is a rare inflammatory condition affecting hair follicles in the scalp, brows, pubic area, or other hair-bearing skin. It leads to permanent hair loss in the affected areas due to scarring.

The exact cause of LPP has yet to be fully understood. Still, it's believed to be an autoimmune disorder where the body's immune system mistakenly attacks the hair follicles, causing inflammation and subsequent damage. Genetic, environmental, and immunological factors may contribute to its development.

Symptoms of LPP include patchy hair loss on the scalp; itchy scalp; redness, scaling, and inflammation in affected areas; follicular plugging (where hair follicles get plugged with keratin); permanent hair loss and scarring in severe cases.

Diagnosis of lichen planopilaris often involves a physical examination by a dermatologist. It may include a scalp biopsy to confirm the condition.

Treatment aims to reduce inflammation and prevent further hair loss. Treatment options may include topical or oral

corticosteroids, immunosuppressive medications, topical calcineurin inhibitors, and sometimes procedures like laser therapy or steroid injections.

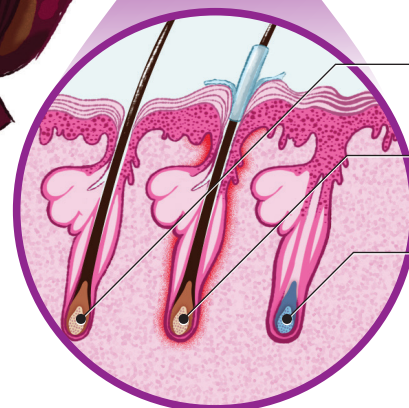
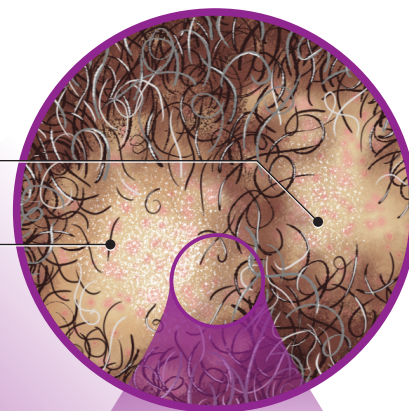
Since LPP can lead to scarring and irreversible hair loss, early diagnosis and prompt treatment are crucial in managing the condition and potentially preserving hair follicles.

Regular follow-ups with a dermatologist can help monitor the condition and adjust treatment as necessary.

## SYMPTOMS

Patchy hair loss and Itchy scalp

Permanent hair loss and scarring in severe cases



Peritubular cast

Perifollicular scales

Blue gray dots

Healthy follicle

Inflamed follicle

Scarred follicle

50 year old Black woman with Lichen planopilaris